



# INSTRUCTION BULLETIN

No. 9010949  
Machine: T12  
Published: 06-2013  
Rev. 00

**NOTE: DO NOT DISCARD the Parts List from the Instruction Bulletin. Place the Parts List in the appropriate place in the machine manual for future reference. Retaining the Parts List will make it easier to reorder individual parts and will save the cost of ordering an entire kit.**

*NOTE: Numbers in parenthesis ( ) are reference numbers for parts listed in Bill of Materials.*

Installation instructions for **kit number 9009836**

## SYNOPSIS:

This kit contains the parts needed to install a deluxe seat kit onto T12 scrubbers.  
Please follow step-by-step instructions.

## SPECIAL TOOLS / CONSIDERATIONS: NONE

(Estimated time to complete: 1.5 hours)



### PROTECT THE ENVIRONMENT

Please dispose of packaging materials, old machine components, and hazardous fluids in an environmentally safe manner according to local waste disposal regulations.



Always remember to recycle.

## PREPARATION:

1. Park the machine on a clean level surface, turn off the machine, and remove the key.

**FOR SAFETY: Before leaving or servicing machine, stop on level surface, turn off machine, and remove key.**

2. Disconnect the battery cable from the machine.



**WARNING: Always disconnect battery cables from machine before working on electrical components.**

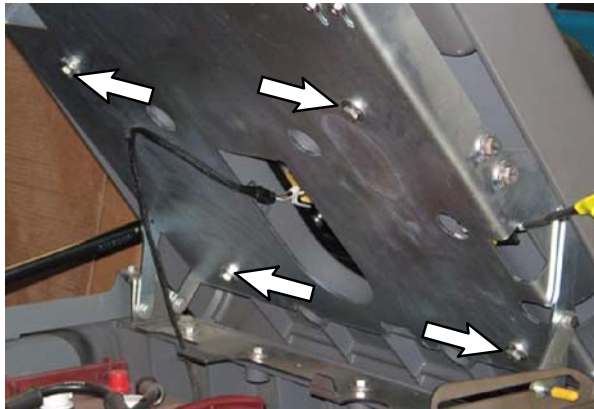
**INSTALLATION:**

1. Disconnect the seat switch wire harness from the seat switch. (Fig. 1)



**FIG. 1**

2. Remove the four M8 hex screws securing the operator seat shroud to the seat channel. Set the M8 hex screws aside. (Fig. 2)



**FIG. 2**

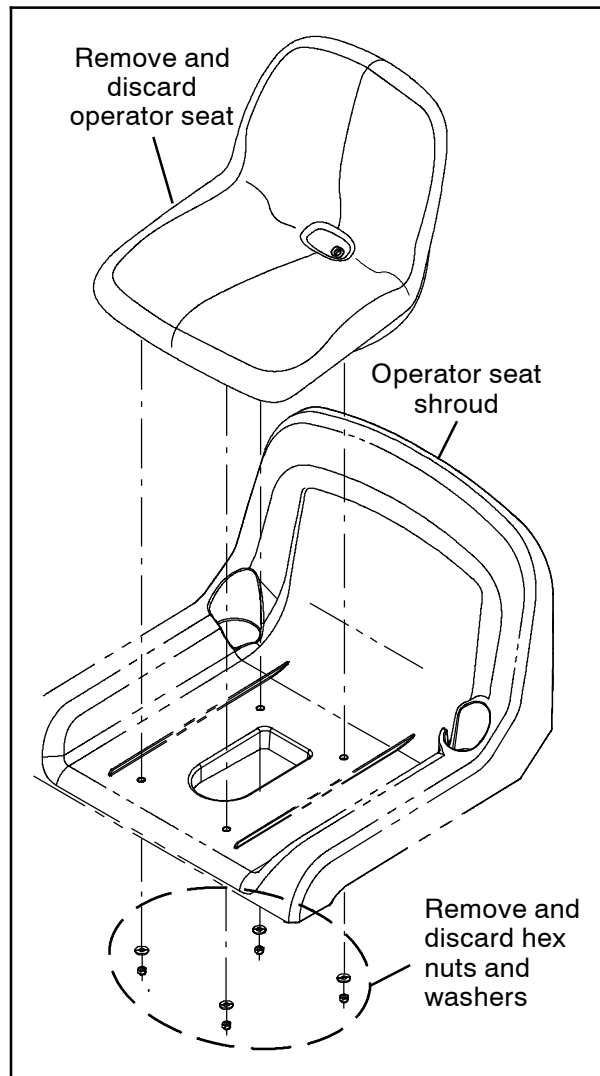
3. Lift the operator seat / operator seat shroud from the seat channel.

*NOTE: Due to weight of operator seat / operator seat shroud, two persons are required to lift operator seat / operator seat shroud from the seat channel.*

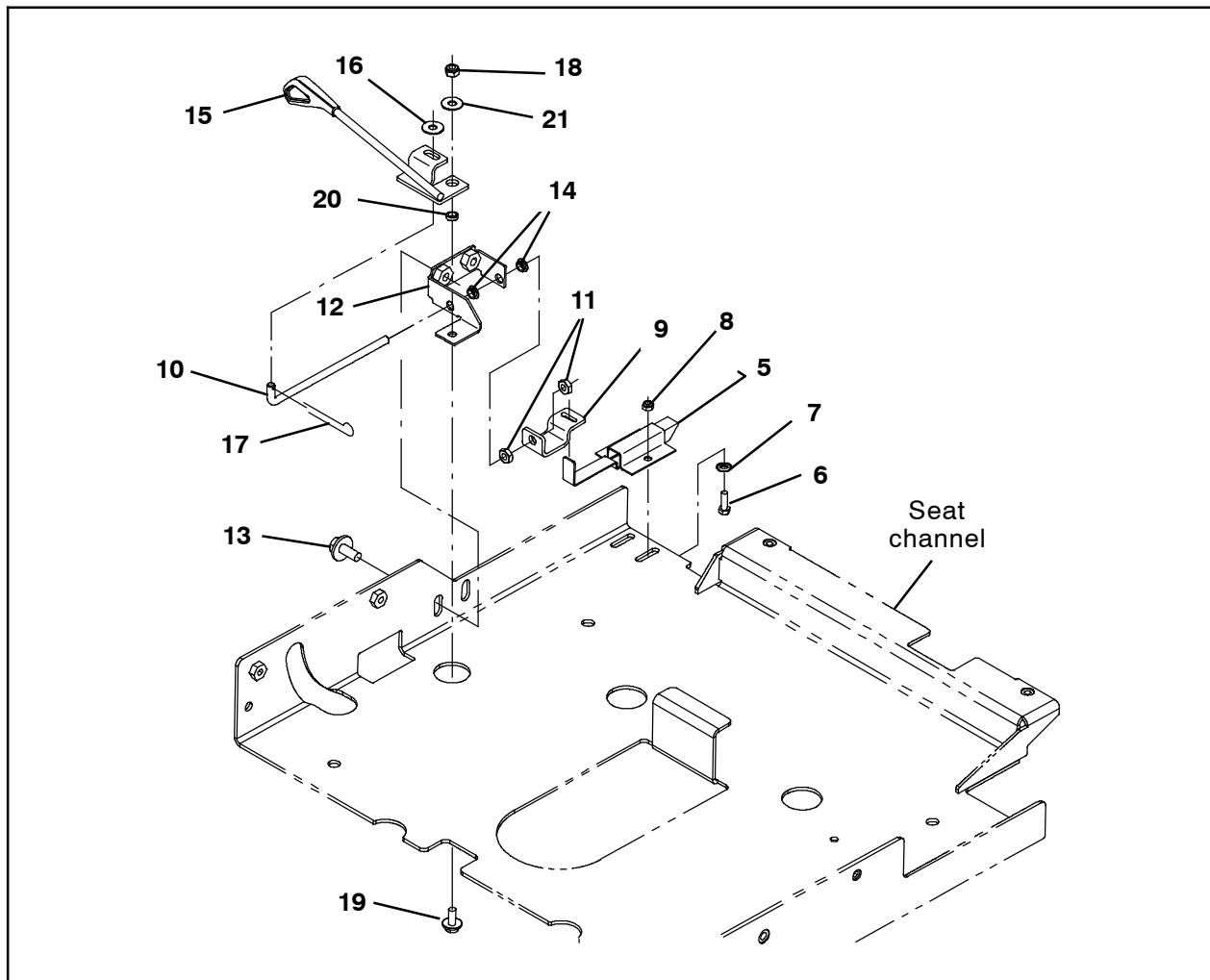
4. Remove the four hex nuts and four washers securing the back of the operator seat to the seat shroud. Discard the operator seat assembly (seat / slide tracks), hex nuts, and washers. (Fig. 3 / Fig. 4)



**FIG. 3**

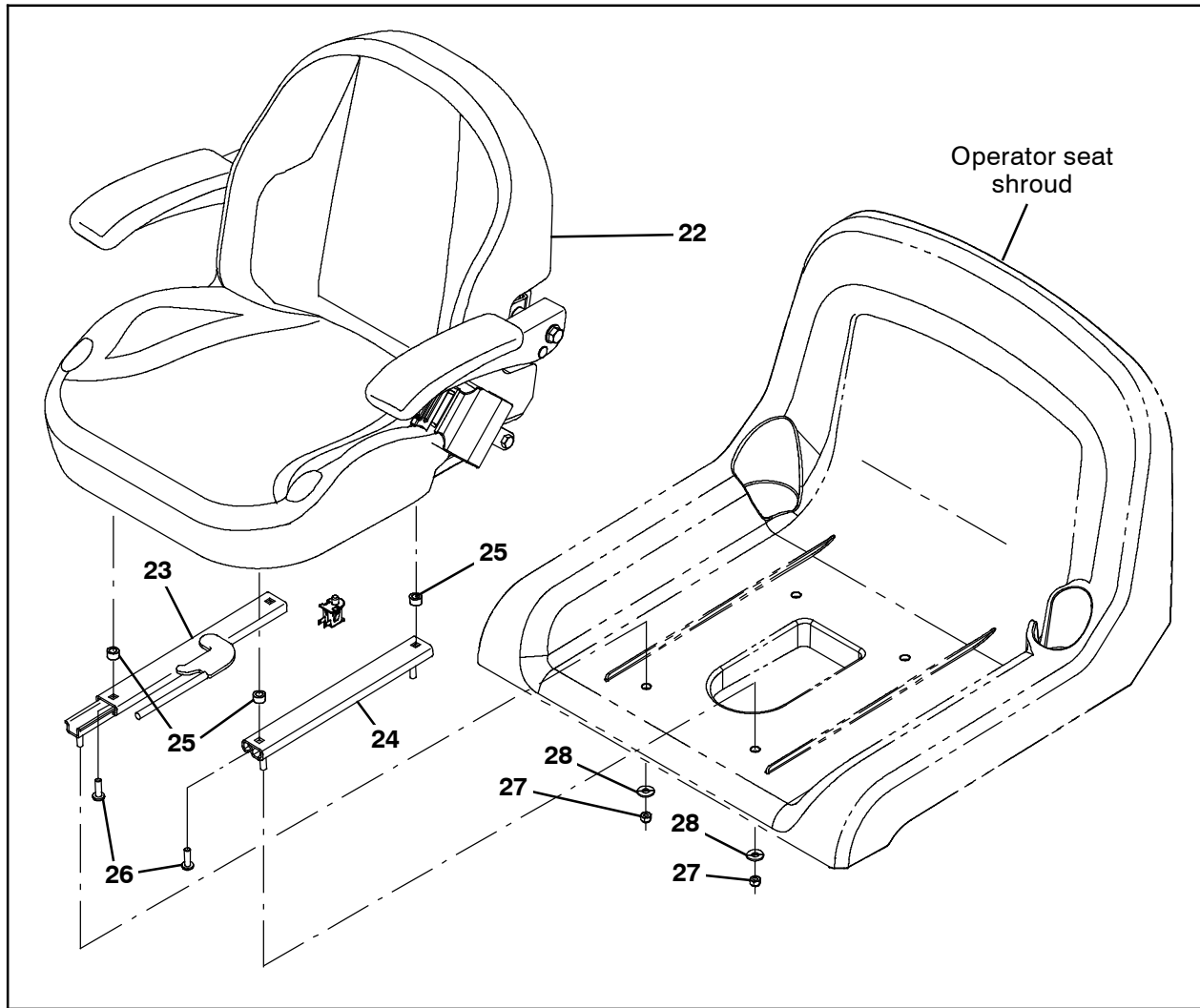


**FIG. 4**



**FIG. 5**

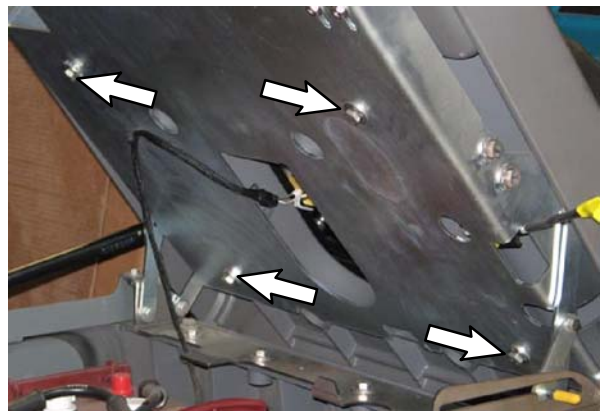
5. Insert the two snap bushings (14) into the latch bracket (12). (Fig. 5)
6. Use one M6 hex screw (19), one sleeve (20), one flat washer (21), and one M6 hex nut (18) to install the seat latch handle (15) onto the latch bracket (12). (Fig. 5)
7. Use two M8 SEMS hex screws (13) to install the items assembled in the previous two steps onto the seat channel. (Fig. 5)
8. Insert the latch handle (10) into latch bracket (12) and use a cotter pin (17) and flat washer (16) to install the latch handle onto the seat latch handle (15). (Fig. 5)
9. Thread one hex jam nut (11) onto the latch handle (10). (Fig. 5)
10. Slide the latch angle (9) onto the latch handle (10). (Fig. 5)
11. Thread another hex jam nut (11) onto the latch handle (10). Do not completely tighten either hex jam nut against the latch angle (9). The hex jam nuts are tightened during final adjustment. (Fig. 5)
12. Use two M5 hex nuts (6), two flat washers (7), and two M5 hex nuts (8) to install the latch (5) onto the seat channel. (Fig. 5)
13. Adjust the hex jam nuts (11) so the latch angle (9) can be hooked onto the latch (5). (Fig. 5)
14. Tighten the hex jam nuts (11) to secure the latch angle (9) into place on the latch handle (10) and latch (5). (Fig. 5)



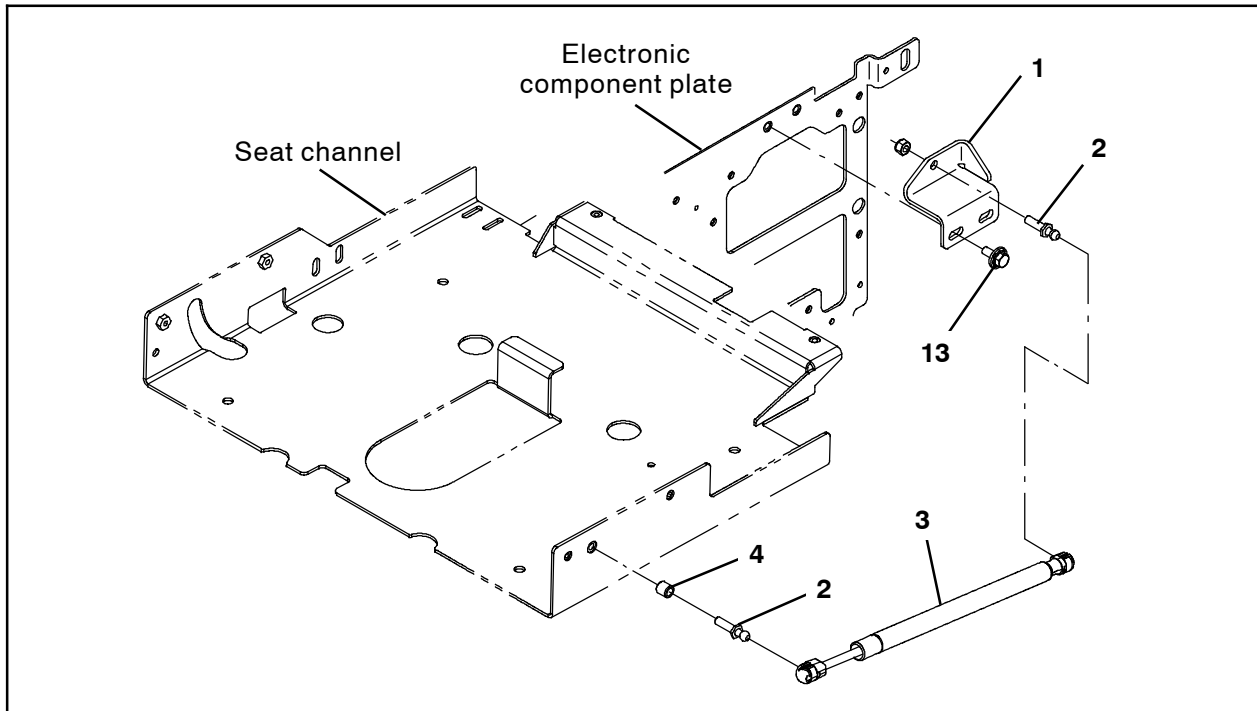
**FIG. 6**

15. Apply a light coat of blue Loctite onto four pan screws (26) that will be used to install the seat slide track with the handle (23) and the seat slide track (24) onto the seat (22). (Fig. 6)
16. Use two pan screws (26) and two spacers (25) to install the seat slide track with the handle (23) onto the new seat (22). (Fig. 6)
17. Use two pan screws (26) and two spacers (25) to install the seat slide track (24) onto the new operator seat (22). (Fig. 6)
18. Use four hex nuts (27) and four flat washers (8) to install the operator seat (22) onto the operator seat shroud. (Fig. 6)

19. Use M8 hex screws to install the operator seat / operator seat shroud onto the seat channel. (Fig. 7)

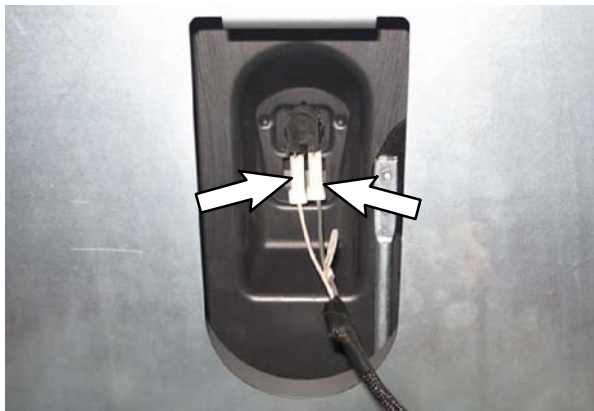


**FIG. 7**



**FIG. 8**

20. Use two M8 SEMS hex screws (13) to install the ball stud bracket (1) onto the electronic component plate. (Fig. 8)
21. Thread a ball stud (2) into the ball stud bracket (1). (Fig. 8)
22. Insert a sleeve (4) onto the remaining ball stud (2) and thread the ball stud into the seat channel. (Fig. 8)
23. Install the gas spring (3) onto the ball studs (2) in the seat channel and electronic component plate. (Fig. 8)
24. Connect the seat switch wire harness to the seat switch in the new seat (22). (Fig. 9)
25. Open and close the operator seat / operator seat shroud to ensure the latch is engaged when the seat / shroud are closed and seat latch assembly opens the latch when the handle is pulled to open the operator seat / shroud.
26. Reconnect the battery cable to the machine.
27. Start the machine. Test the operator seat switch to ensure the machine propels when there is an operator in the operator seat and that it does not propel when there is not an operator in the operator seat.



**FIG. 9**

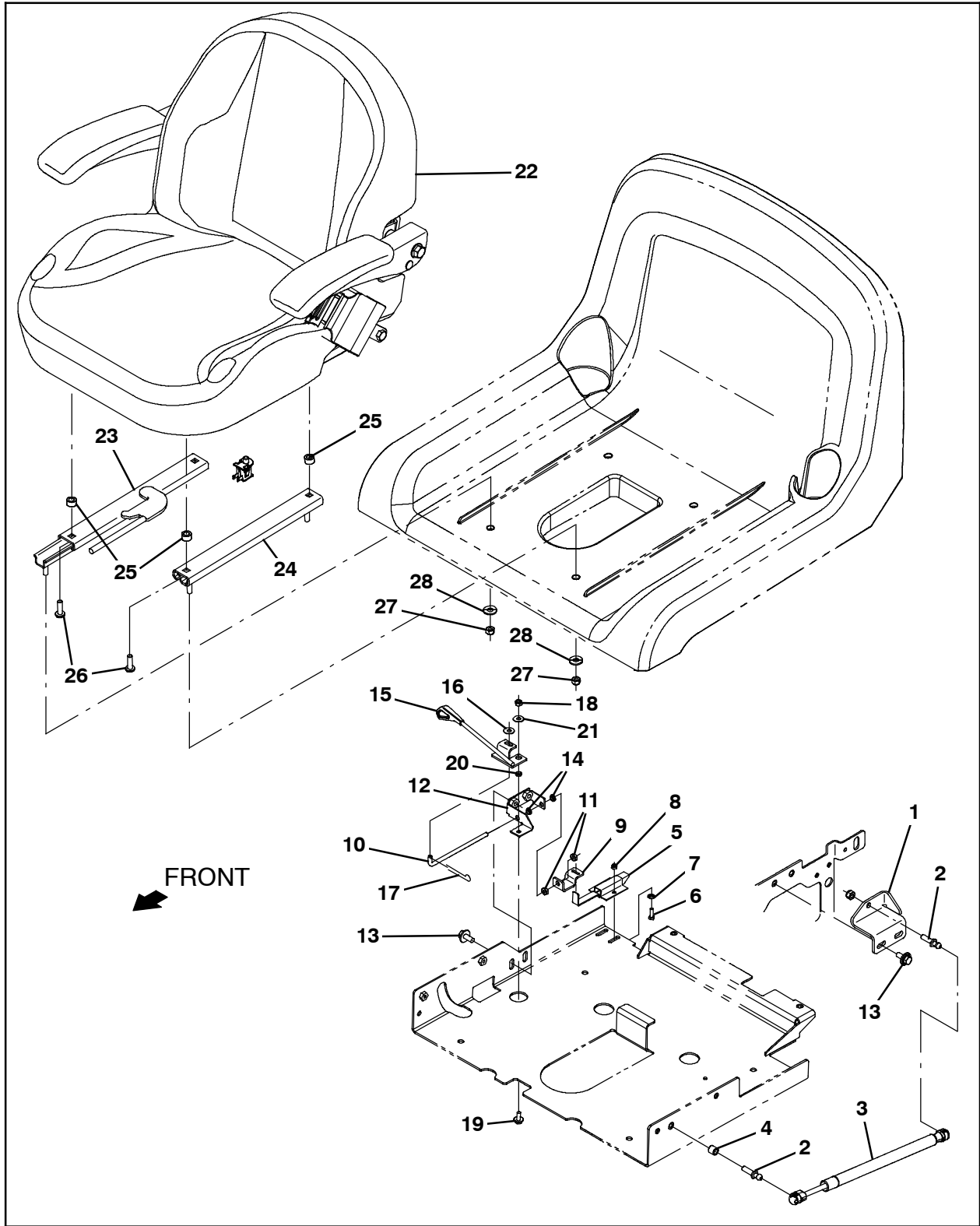


FIG. 10

**Bill Of Materials For Seat Kit, Deluxe, CI [T12] - 9009836**

Ref.	Tennant Part No.	Description	Qty.
▽	9009836	Seat Kit, Deluxe, Ci [T12]	1
▲	1 1202800	Bracket, Mtg, Ball Stud	1
▲	2 1012878	Stud, Ball, .39d .31- 18	2
▲	3 1202910	Gas spring, 34lb, 8.7strk	1
▲	4 222460	Sleeve, P/M, 0.32b 0.50d 0.5l [430ss]	1
▲	5 1025736	Latch	1
▲	6 24199	Screw, Hex, M5 X 0.80 X 16, SS	2
▲	7 140011	Washer, Flat, 0.21b 0.45d .03, SS	2
▲	8 09739	Nut, Hex, Lock, M5 X 0.80, NI, SS	2
▲	9 1200999	Angle, Latch	1
▲	10 1203958	Handle, Latch	1
▲	11 32520	Nut, Hex, Jam, .25- 20	2
▲	12 1203946	Bracket Wldt, Latch	1
▲	13 1020341	Screw, Hex, M8 X 1.25 X 20, Ss, SEMS	4
▲	14 80921	Bushing, Snap- In, 0.25b 0.31d 0.08th Nyl	2
▲	15 1205295	Handle Assy, Latch, Seat	1
▲	16 01684	Washer, Flat, 0.27b 0.69d .05, SS	2
▲	17 08085	Pin, Cotter, Hair, 0.31d .058 Wir	1
▲	18 08712	Nut, Hex, Lock, M6 X 1.00, NI, SS	1
▲	19 1034731	Screw, Hex, M6 X 1.00 X 16, SS, SEMS	1
▲	20 1205764	Sleeve, P/M, 0.25b 0.38d 0.1l [430ss]	1
▲	21 29570	Washer, Flat, 0.28b 1.00d .06, Stl	1
▲	22 1201428	Seat, Dlx, W/ Armrests & Seat belt	1
▲	23 360370	Track, Slide, Seat Adj, 12.5l, W/Latch	1
▲	24 360369	Track, Slide, Seat Adj, 12.5l	1
▲	25 1051052	Spacer, Rnd, .38b .88d .38l	4
▲	26 49177	Screw, Pan, Phl, .31- 18 X 1.00, G2	4
▲	27 32983	Nut, Hex, Lock, .31- 18, NI	4
▲	28 01685	Washer, Flat, 0.38b 0.88d .08, SS	4

TENNANT COMPANY  
P. O. Box 1452  
Minneapolis, MN 55440-1452